

Test Report No. 7191059121-MEC13-OKB
dated 20 may 2013



PSB Singapore

Note: This report is issued subject to TÜV SÜD PSB's "Terms and Conditions Governing Technical Services".
The terms and conditions governing the issue of this report are set out as attached within this report.

Choose certainty.
Add value.

PERFORMANCE TEST
OF
ALUMINIUM FIXED GLASS WINDOW SYSTEM
(DGU ENCLOSED WITHIN A SET OF ADJUSTABLE BLIND)



IN

ACCORDANCE WITH SS212: 2007

TESTED FOR:

Unicos Tech Pte Ltd
33 Ubi Ave 3, #07-57 Vertex
Singapore 408868

Attn: Mr. Jackson Ang

PREPARED BY:

David Li
Associate Engineer

APPROVED BY:

Ong Khay Beng
Engineer
Mechanical Centre



Laboratory:
TÜV SÜD PSB Pte. Ltd.
No.1 Science Park Drive
Singapore 118221

Phone : +65-6885 1333
Fax : +65-6776 8670
E-mail: testing@tuv-sud-psb.sg
www.tuv-sud-psb.sg
Co. Reg : 199002667R

Regional Head Office:
TÜV SÜD Asia Pacific Pte. Ltd.
3 Science Park Drive, #04-01/05
The Franklin, Singapore 118223
TUV®



SUMMARY OF TEST AND TEST RESULTS

TESTS	TEST PARAMETERS	TEST REQUIREMENTS	RESULTS
Structural Performance	Design load at ± 1200 Pa. (Maintain for 10 seconds each)	No breakage, permanent damage to glass frames or hardware shall occur.	Complied
Proof Load Test	Proof load at ± 1800 Pa. (Maintain for 10 seconds each)		Complied

A handwritten signature in black ink, appearing to read 'Ravindra', with a stylized flourish at the end.



TABLE OF CONTENT

1. INTRODUCTION	Page 4
2. TEST DETAILS	Page 4
3. TEST SPECIFICATIONS AND CRITERIA	Page 4
4. DESCRIPTION OF TEST SPECIMEN	Page 4
5. TEST SEQUENCE	Page 5
6. DETAILS OF TEST RESULTS	Page 6
7. PHOTOGRAPHS	Page 7
8. REFERENCE FOR DETAILS - Company's detailed drawing	Page 8 ~ 10

A handwritten signature in black ink, appearing to read 'David...'. The signature is stylized and includes a large, sweeping flourish at the end.



1. INTRODUCTION

This document consists of the aluminium window system performance test report for tests conducted at TÜV SÜD PSB premises for Unicos Tech Pte Ltd

This report describes the test procedures and records the results obtained during the respective tests.

2. TEST DETAILS

Date Tested : 07 May 2013
Time : 2 pm
Temperature : 27.9°C
Venue : Window Test Chamber 'B' at No. 1 Science Park Drive
Tested by : Ong Khay Beng & David Li (TÜV SÜD PSB)

3. TEST SPECIFICATIONS

The performance tests were tested in accordance with the following specifications:

- i) Structural Performance – Annex C of SS 212: 2007
- ii) Proof Load Test – Annex D of SS 212: 2007

4. TEST CRITERIA

The criteria were specified as below:

S/N	Tests Conducted	SS 212: 2007 Requirements
1.	Structural Performance	No breakage, permanent damage to glass frames or hardware shall occur.
2.	Proof Load	

5. DESCRIPTION OF TEST SPECIMEN

The test specimen is a single panels, fixed glass system and detail as follow;

Overall window size : 620mm(W) x 1690mm(H)
Framework : Aluminium alloy
Glass type : 25.5mm thick, DGU tempered glass
(3.2mm thk, clear tempered glass + 15.1mm air space with Blind + 3.2mm thk, clear tempered glass)
Sealant : Polysulfide
Reference for details : 3 sheets of Company's window drawings.



6. TEST SEQUENCE

The performance test is conducted in the following sequence:

STRUCTURAL PERFORMANCE

- i) A preliminary load of 600 Pa is applied onto the specimen before the test.
- ii) Residual readings of the deflection are recorded 3-5 minutes after the load is removed by means of displacement transducers.
- iii) A positive design air pressure 1200 Pa is then applied gradually and maintained for 10 seconds
- iv) After the maximum load is applied and deflections taken, the load is removed and residual deflections taken 3 to 5 minutes later.
- v) The steps are then repeated for the negative pressure, -600 Pa (pre-load) & -1200 Pa (design load).

PROOF LOAD

- i) After the structural performance test, the mock-up specimen is subjected to a positive pressure of 1.5 times the design pressure, i.e. 1800 Pa.
- ii) The specimen is observed for any damage or permanent distortion. A residual deflection is taken 3 to 5 minutes after the pressure is removed.
- iii) The above steps are then repeated for the negative pressure, -1800 Pa.

A handwritten signature in black ink, appearing to read 'David H. G.' with a stylized flourish at the end.

6. DETAILS OF TEST RESULTS

6.1(A) STRUCTURAL PERFORMANCE (POSITIVE PRESSURE)

Point	Displacement of Test Specimen (mm)					
	Span (mm)	Test Pressure	Relative Deflection at 1200 Pa	Test Requirements	Residual Deflection	
		1200 Pa			After Pre-load of 600 Pa	After Structural Load of 1200 Pa
1	500 Glass	0.65	1.82 (For information only)	Nil	0.02	0.05
2		3.30			0.06	0.10
3		2.31			0.06	0.13

Results: Passed (No Permanent damage is observed).

6.1(B) STRUCTURAL PERFORMANCE (NEGATIVE PRESSURE)

Point	Displacement of Test Specimen (mm)					
	Span (mm)	Test Pressure	Relative Deflection at -1200 Pa	Test Requirements	Residual Deflection	
		-1200 Pa			After Pre-load of -600 Pa	After Structural Load of -1200 Pa
1	500 Glass	-0.65	1.96 (For information only)	Nil	-0.07	-0.02
2		-3.39			-0.21	-0.09
3		-2.22			-0.18	-0.17

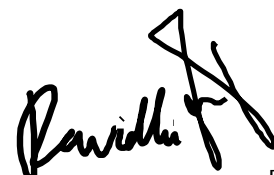
Results: Passed (No Permanent damage is observed).

6.2 PROOF LOAD

Point	Displacement of Test Specimen (mm)	
	Residual Deformation after maximum test pressure of 1800 Pa was removed	Residual Deformation after maximum test pressure of -1800 Pa was removed
1	0.14	-0.16
2	0.43	-0.48
3	0.68	-0.66

Results: Passed (No Permanent damage is observed).

Note: Refer to Figure 1 on page 7 for locations of deflection points.

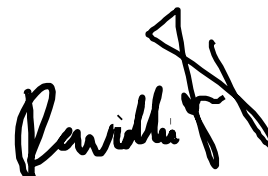




Group photo 1: Mock-up test specimen (View from inside building).

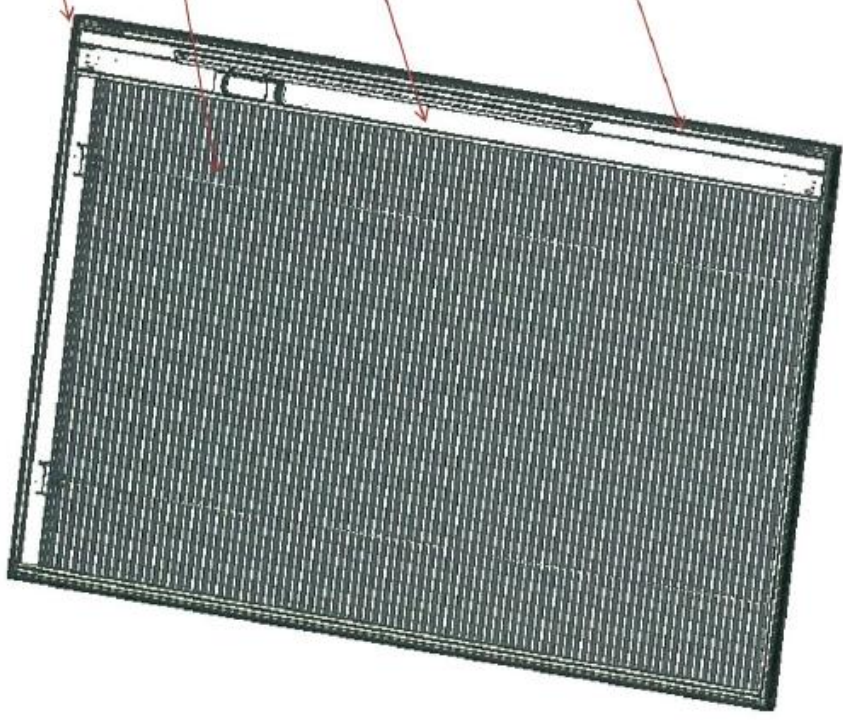


Photo 2: Location of transducer points on mock-up test specimen
(View from inside building)




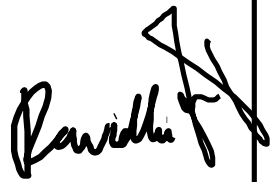
7. DRAWINGS

DES BUILDING INNOVATE SDN. BHD. (1025453-V)





Material	Part No.	Title	
	N/A	Overall Drawing	
Designed/Date	Checked/Date	Drawing No.	Rev. A
Reviewed/Date		Scale N/A	Sheet 1 of 1
		Weight N/A	

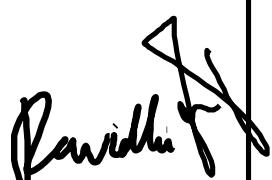




7. DRAWINGS (CONT'D)

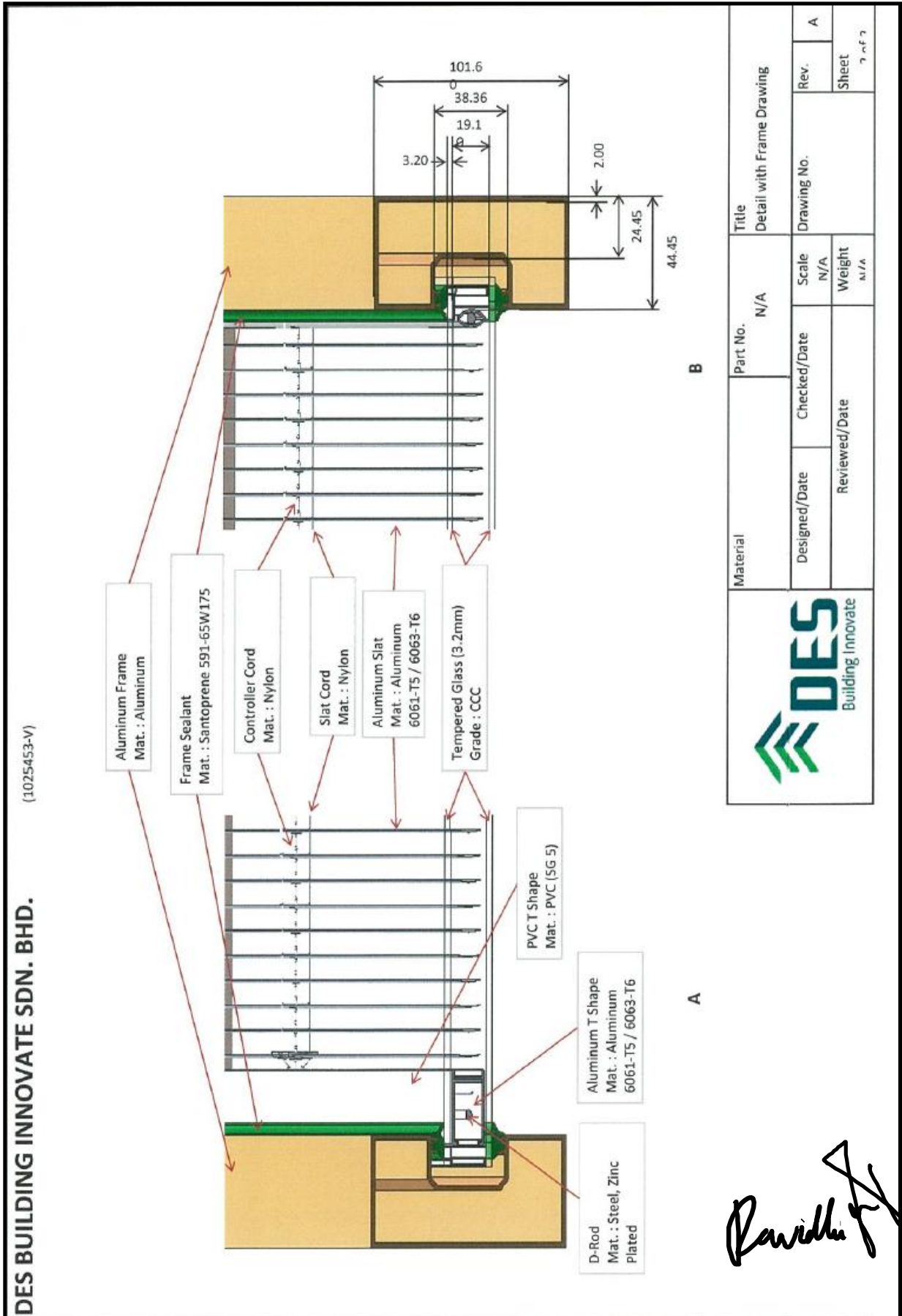


		Material		Part No.		Title	
		N/A		Detail with Frame Drawing			
Designed/Date	Checked/Date	Scale	Drawing No.	Rev.	A		
Reviewed/Date		N/A	Sheet		1 of 3		
		Weight					
		N/A					



DES BUILDING INNOVATE SDN. BHD. (1025453-V)

7. DRAWINGS (CONT'D)



Test Report No. 7191059121-MEC13-OKB
dated 20 may 2013



PSB Singapore

Please note that this Report is issued under the following terms :

1. This report applies to the sample of the specific product/equipment given at the time of its testing/calibration. The results are not used to indicate or imply that they are applicable to other similar items. In addition, such results must not be used to indicate or imply that TÜV SÜD PSB approves, recommends or endorses the manufacturer, supplier or user of such product/equipment, or that TÜV SÜD PSB in any way "guarantees" the later performance of the product/equipment. Unless otherwise stated in this report, no tests were conducted to determine long term effects of using the specific product/equipment.
2. The sample/s mentioned in this report is/are submitted/supplied/manufactured by the Client. TÜV SÜD PSB therefore assumes no responsibility for the accuracy of information on the brand name, model number, origin of manufacture, consignment or any information supplied.
3. Nothing in this report shall be interpreted to mean that TÜV SÜD PSB has verified or ascertained any endorsement or marks from any other testing authority or bodies that may be found on that sample.
4. This report shall not be reproduced wholly or in parts and no reference shall be made by the Client to TÜV SÜD PSB or to the report or results furnished by TÜV SÜD PSB in any advertisements or sales promotion.
5. Unless otherwise stated, the tests were carried out in TÜV SÜD PSB Pte Ltd, No.1 Science Park Drive Singapore 118221.

July 2011

